

ACCESSORI per fissaggio defender

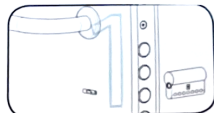
MADE
IN
ITALY



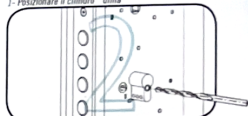
98AC10



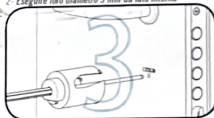
safeguarding your security



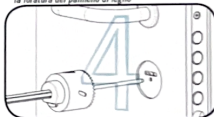
1- Posizionare il cilindro "dima"



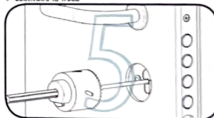
2- Eseguire foro diametro 5 mm da lato interno



3- Utilizzando il foro generato come dima eseguire la foratura del pannello di legno



4- Sostituire la fresa



5- Effettuare la foratura del pannello d'acciaio



6- Montare il Defender

Mottura Serrature di Sicurezza S.p.A.
Strada Antica di Francia, 34
10057 Sant'Ambrogio (Torino) Italia
www.mottura.it

