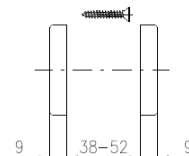
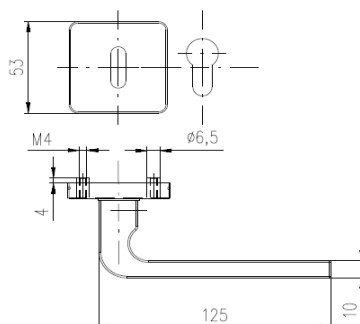
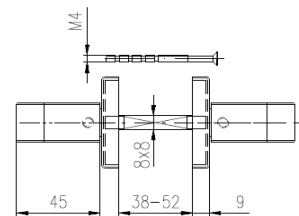
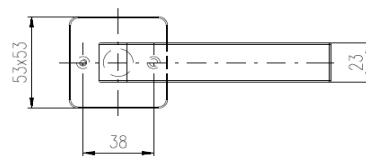


# Door handle

## DANTE/H



- ✓ Material stainless steel
- ✓ Concealed steel under roses
- ✓ Classification acc. to EN 1906
- ✓ Recommended for door with higher frequency of passages
- ✓ Door thickness 38-52 mm
- ✓ (WC escutcheon 38-43 mm)
- ✓ Variant: handle-handle, handle-knob
- ✓ Finish: stainless steel satin, black

